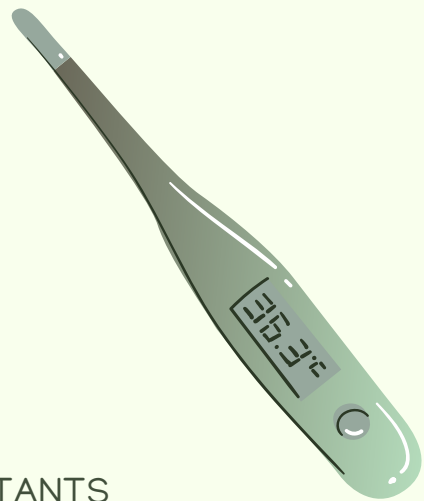


CAREERS IN HEALTH CARE SUPPORT

HEALTH CARE SUPPORT WORKERS OFFER AID AND ASSISTANCE TO PRACTITIONERS AND PATIENTS.

JOB IN THIS FIELD INCLUDE:

- PERSONAL CARE AIDES
- NURSING ASSISTANTS
- MEDICAL ASSISTANTS
- HOME HEALTH AIDES
- DENTAL ASSISTANTS
- PHLEBOTOMISTS
- PHYSICAL THERAPY ASSISTANTS
- OCCUPATIONAL THERAPY ASSISTANTS



WHAT SKILLS ARE NEEDED?

- MEDICATION ADMINISTRATION
- CAREGIVING ABILITIES
- PEDIATRIC KNOWLEDGE
- GERIATRIC KNOWLEDGE
- MEDICAL REPORTING



DEMAND
FOR PEOPLE WHO ARE
BILINGUAL



THE AVERAGE ANNUAL WAGE IS
\$30,200 PER YEAR

WHAT KINDS OF EMPLOYERS ARE HIRING?

- HOME HEALTH AGENCIES
- NURSING HOMES
- ASSISTED LIVING CENTERS
- HOSPITALS
- PHYSICIAN OFFICES
- DENTIST OFFICES
- LABORATORIES

2,295

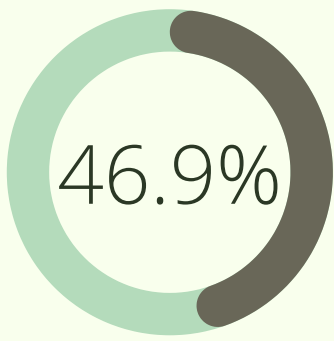
PROJECTED JOB
OPENINGS PER YEAR



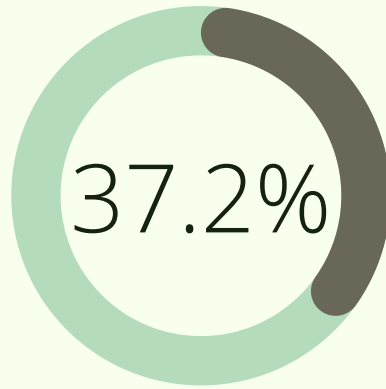
The Institute

Turning Information into Insight

Skills and Education



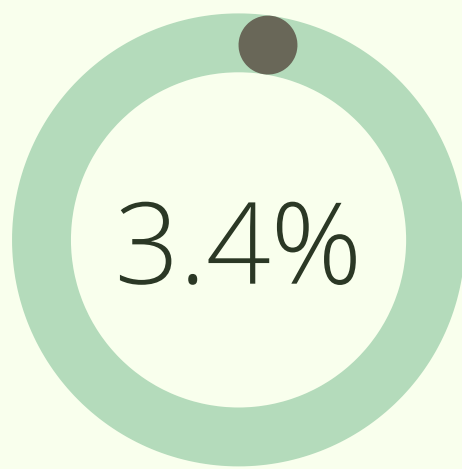
People in these careers with high school education or less



People in these careers with some college or two-year degrees



People in these careers with four-year degrees



People in these careers with master's degrees or higher

Students enter programs for medical assisting, phlebotomy, dental assisting, physical therapy, and occupational therapy



Level of Education Needed

